

2020-2021 Candidate Impact on P-12 learning and development

Teacher candidates are required to complete the Praxis Performance of Teachers (PPAT) Assessment from ETS during their clinical experience. PPAT is a nationally normed teacher performance assessment that evaluates candidate's abilities to impact student learning and demonstrate that they have basic pedagogical content knowledge and application for the classroom to begin teaching as an entry-level teacher.

The PPAT assessment contains four tasks:

- Task 1: Knowledge of Students and the Learning Environment
- Task 2: Assessment and Data Collection to Measure and Inform Student Learning
- Task 3: Designing Instruction for Student Learning
- Task 4: Implementing and Analyzing Instruction to Promote Student Learning.

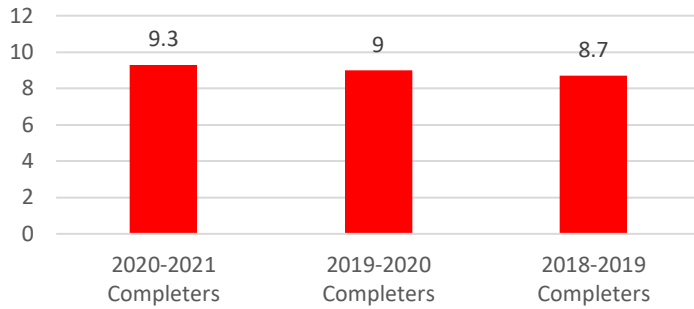
Task 1, a formative task, is not scored by ETS. Tasks 2, 3, and 4 are centrally scored by ETS-trained raters using rubrics that contain quantitative and qualitative elements of evidence. The national recommended passing score established by a panel of educators through a multi-state standard-setting study is 40 and adopted by our EPP. Over a three-semester cycle of PPAT assessment data, our candidate's average scores were 45.4 with standard Deviation, σ : 1.24. This score demonstrates our candidates can plan, develop, and implement lessons using standards-based instruction to facilitate student learning.

Task 2: Assessment and Data Collection to Measure and Inform Student Learning

2020-2021 All Completers	PPAT Score	Total Points 12	Task 2: Assessment and Data Collection to Measure and Inform Student Learning	Step 1: Planning the Assessment	Step 2: Administering the Assessment and Analyzing the Data	Step 3: Reflecting
	42		9	3	3	3
	44		8.5	3	3	2.5
	45		9	3	3	3
	45		9	3	3	3
	51		11	4	4	3
	AVERAGES		45.4	9.3	3.2	3.2

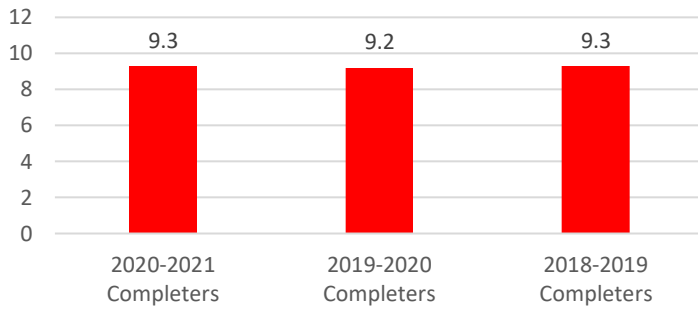
2020-2021 Completers Elementary Education K-6	PPAT Score	Total Points 12	Task 2: Assessment and Data Collection to Measure and Inform Student Learning	Step 1: Planning the Assessment	Step 2: Administering the Assessment and Analyzing the Data	Step 3: Reflecting
	42		9	3	3	3
	44		8.5	3	3	2.5
	45		9	3	3	3
	45		9	3	3	3
	51		11	4	4	3
	AVERAGES		45.4	9.3	3.2	3.2

Task 2: Assessment and Data Collection to Measure and Inform Student Learning **All Completer Averages**



Standard Deviation, σ :	0.351188
Count, N:	3
Sum, Σx :	26.9
Mean, μ :	8.966667
Variance, σ^2 :	0.082222

Task 2: Assessment and Data Collection to Measure and Inform Student Learning **Elementary Education Averages**



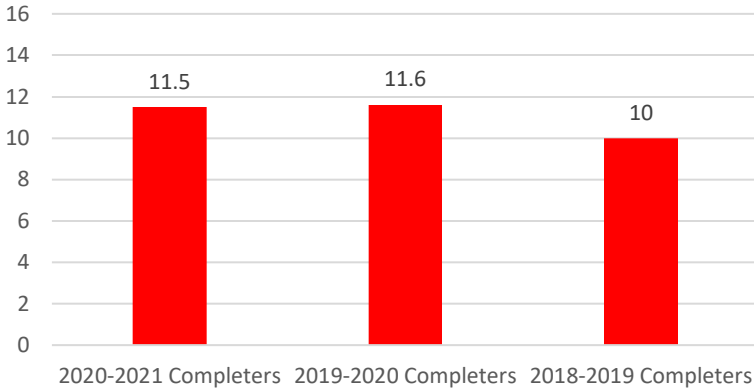
Standard Deviation, σ :	0.057735
Count, N:	3
Sum, Σx :	27.8
Mean, μ :	9.266667
Variance, σ^2 :	0.002222

Task 3: Designing Instruction for Student Learning

2020-2021 All Completers	PPAT Score	Total Points 16	Task 3: Designing Instruction for Student Learning	Step 1: Planning the Lesson	Step 2: The Focus Students	Step 3: Analyzing Instructions	Step 4: Reflecting
	42		10.5	3	2.5	3	2
	44		11	2.5	3	3	2.5
	45		12	3	3	3	3
	45		12	3	3	3	3
	51		12	3	3	3	3
AVERAGES	45.4		11.5	2.9	2.9	3	2.7

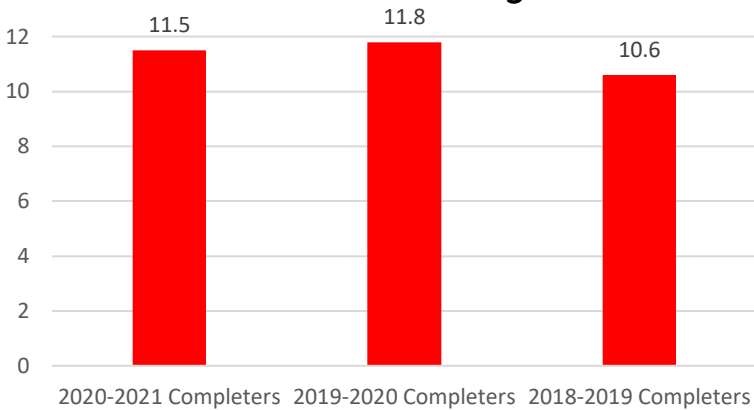
2020-2021 Completers	PPAT Score	Total Points 16	Task 3: Designing Instruction for Student Learning	Step 1: Planning the Lesson	Step 2: The Focus Students	Step 3: Analyzing Instructions	Step 4: Reflecting
Elementary Education K-6	42		10.5	3	2.5	3	2
	44		11	2.5	3	3	2.5
	45		12	3	3	3	3
	45		12	3	3	3	3
	51		12	3	3	3	3
AVERAGES	45.4		11.5	2.9	2.9	3	2.7

Task 3: Designing Instruction for Student Learning
All Completer Averages



Standard Deviation, σ :	0.896289
Count, N:	3
Sum, Σx :	33.1
Mean, μ :	11.03333
Variance, σ^2 :	0.535556

Task 3: Designing Instruction for Student Learning
Elementary Education Averages



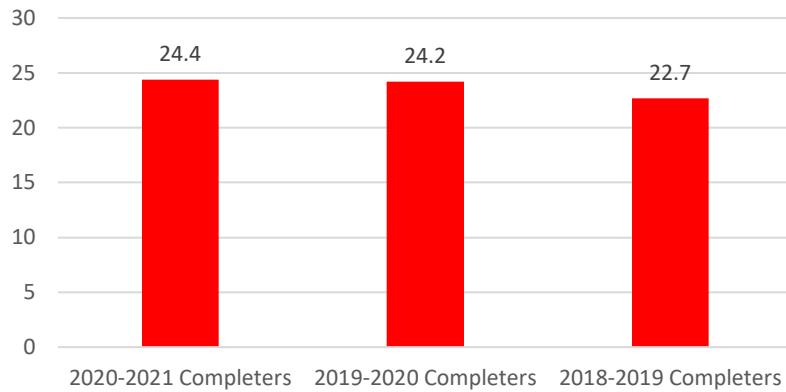
Standard Deviation, σ :	0.6245
Count, N:	3
Sum, Σx :	33.9
Mean, μ :	11.3
Variance, σ^2 :	0.26

Task 4: Implementing and Analyzing Instruction

2020-2021 All Completers	PPAT Score	Total Points 32	Task 4: Implementing and Analyzing Instruction	Step 1: Planning	Step 2: Implementing the Plan	Step 3: The Focus Students	Step 4: Reflecting
			42	22	3	3	2.5
44	24	3	3	3	3		
45	24	3	3	3	3		
45	24	3	3	3	3		
51	28	4	3	3	4		
AVERAGES	45.4	24.4	3.2	3	3	3.2	

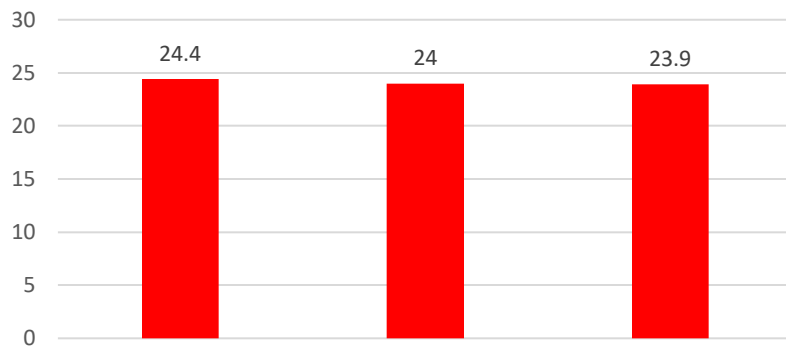
2020-2021 Completers Elementary Education K-6	PPAT Score	Total Points 32	Task 4: Implementing and Analyzing Instruction	Step 1: Planning	Step 2: Implementing the Plan	Step 3: The Focus Students	Step 4: Reflecting
			42	22	3	3	2.5
44	24	3	3	3	3		
45	24	3	3	3	3		
45	24	3	3	3	3		
51	28	4	3	3	4		
AVERAGES	45.4	24.4	3.2	3	3	3.2	

Task 4: Implementing and Analyzing Instruction **All** Completer Averages



Standard Deviation, σ :	0.92916
Count, N:	3
Sum, Σx :	71.3
Mean, μ :	23.7667
Variance, σ^2 :	0.57556

Task 4: Implementing and Analyzing Instruction **Elementary Education** Averages



Standard Deviation, σ :	0.26458
Count, N:	3
Sum, Σx :	72.3
Mean, μ :	24.1
Variance, σ^2 :	0.04667